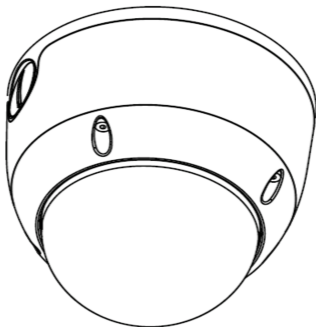




ClareVision Video
Surveillance

Varifocal Series Dome Camera Installation Guide



For Setting up cameras and complete user manuals, please scan these QR codes:

Quick Start Guide



<https://bit.ly/3ndBOKO>

User Manual



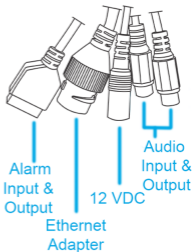
<https://bit.ly/3gEEj7s>

Box Contents

- Camera
- Mounting template
- Mounting kit
- Accessory kit

Required Equipment

- Phillips head screwdriver
- Power source: Ethernet cable
- Drill with 1/4" drill bit



Inspection

Ensure that the device is in good condition and all the assembly parts are included.

- Make sure that all equipment is powered off during installation.
- Ensure the mounting surface is strong enough to withstand three times the weight of the camera and the mount.
- If the product does not function properly, please contact technical support. **Do not disassemble the camera for repair or maintenance.**

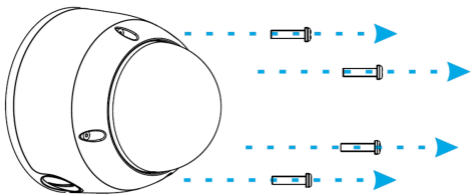


WARNING: This product can expose you to chemicals including cadmium, which which is known to the State of California to cause cancer. For more information, go to www.p65warnings.ca.gov.

Camera Installation

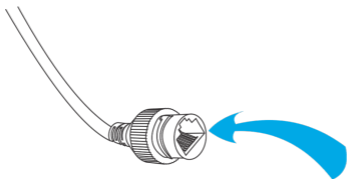
Note: The optional wall mount is sold as a separate item. The first three steps of this Installation Guide apply to installing both with and without the optional wall mount.

1. Drill a cable hole and $\frac{1}{4}$ " pilot holes using the supplied template.
2. Using the provided hex-key, loosen the cover screws on the outer cover assembly. Remove the outer cover assembly.



Camera Installation

3. Connect an ethernet cable that is connect-
ed to the desired POE enabled network into
the camera's ethernet adapter.



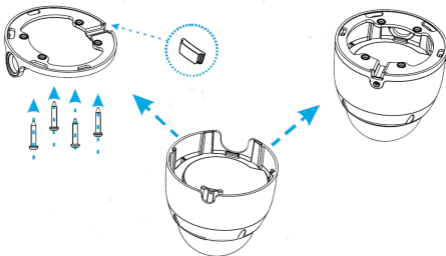
Note: If installing the camera with the wall
mount accessory, please skip to the section:
Wall Mount Accessory Installation and
continue from step 4. If not installing the wall
mount accessory, please continue with the
next steps to complete camera installation.

4. Remove rubber plug.

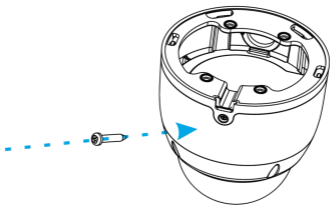
5. Insert the drywall anchors.

Camera Installation

6. Secure the chassis assembly to the mounting surface using provided screws, then slide the main body into the notch on the base.



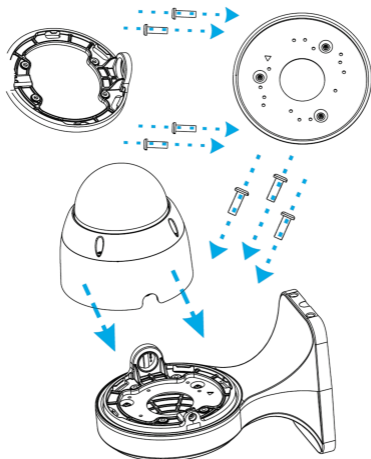
7. Secure the screws, lock the sphere section, and complete the installation.



Wall Mount Accessory Installation

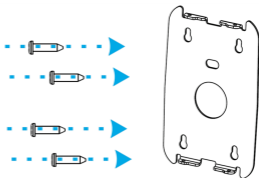
Note: If using the wall mount accessory, follow the first three steps of this guide before continuing with attaching the wall mount.

4. Attach the base to mounting bracket body with screws.



Wall Mount Accessory Installation

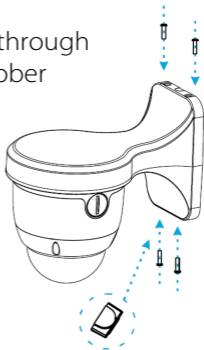
5. Insert drywall anchors. Affix the camera base to the mounting bracket body with provided screws.



6. Remove the rubber plug from the outlet hole.

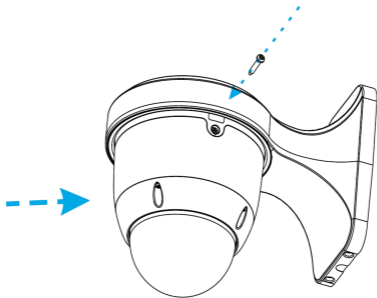
Note: If the wires are fed through the wall, removing the rubber plug is not necessary.

7. Secure the main body of the camera to the mounting bracket using the 4 provided screws.



Wall Mount Accessory Installation

8. Using the provided hex-key, tighten the screw on the side securing the camera body to the base.



Camera Setup & Default Password

IMPORTANT NOTE: The default camera setup password is the **FIRST 6 Characters of the UUID/SN.**

You will be prompted to change the password when setting up the camera. Please refer to the Quick Start Guide for complete setup instructions or by visiting: <https://bit.ly/34blIND>

Support

For additional help:

Integrator/Dealer Support:

Phone: 941.404.1072

Email: claresupport@clarecontrols.com

For more information, instructional videos, or support documentation, visit our Help Center and view your item's product page:

<https://www.clarecontrols.com/helpcenter>

Contact Information

Clare Controls, LLC.

7519 Pennsylvania Ave, Suite 104

Sarasota, FL 34243

General: 941.328.3991

Fax: 941.870.9646

www.clarecontrols.com

Warranty Information

Clare Controls offers a two (2) year limited warranty on original Clare Controls components, from the date of shipment from Clare Controls. To view complete limited warranty details, including limitations and exclusions, please visit:

www.clarecontrols.com/warranty

Camera Information

Please provide this guide to the customer and notate the camera installation location and new camera password. This guide includes important camera details.

Camera Password: _____

Installation Location: _____

Camera Details:

